

# BTL-6000 SHOCKWAVE THERAPY

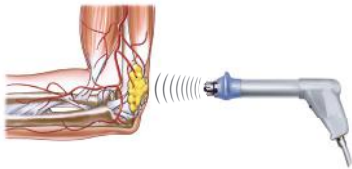
## HIGHLY EFFECTIVE PAIN TREATMENT

Shockwave therapy is a multidisciplinary device used in orthopaedics, physiotherapy, sports medicine, urology and veterinary medicine. Acoustic waves generated by the device trigger biological effects which lead to faster and long-lasting regeneration of the tissue. Its main assets are fast pain relief and mobility restoration. Together with being a non-surgical therapy with no need for painkillers, these assets make it an ideal therapy to speed up recovery and cure various indications causing acute or chronic pain.

### MEDICAL EFFECTS

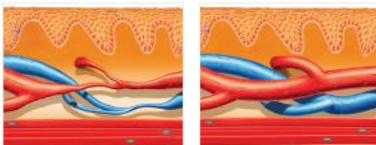
#### Analgesic effect

- Decrease of muscle tension, inhibition of spasms



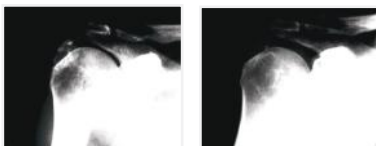
#### Acceleration of healing

- Increased collagen production
- Improved metabolism and microcirculation

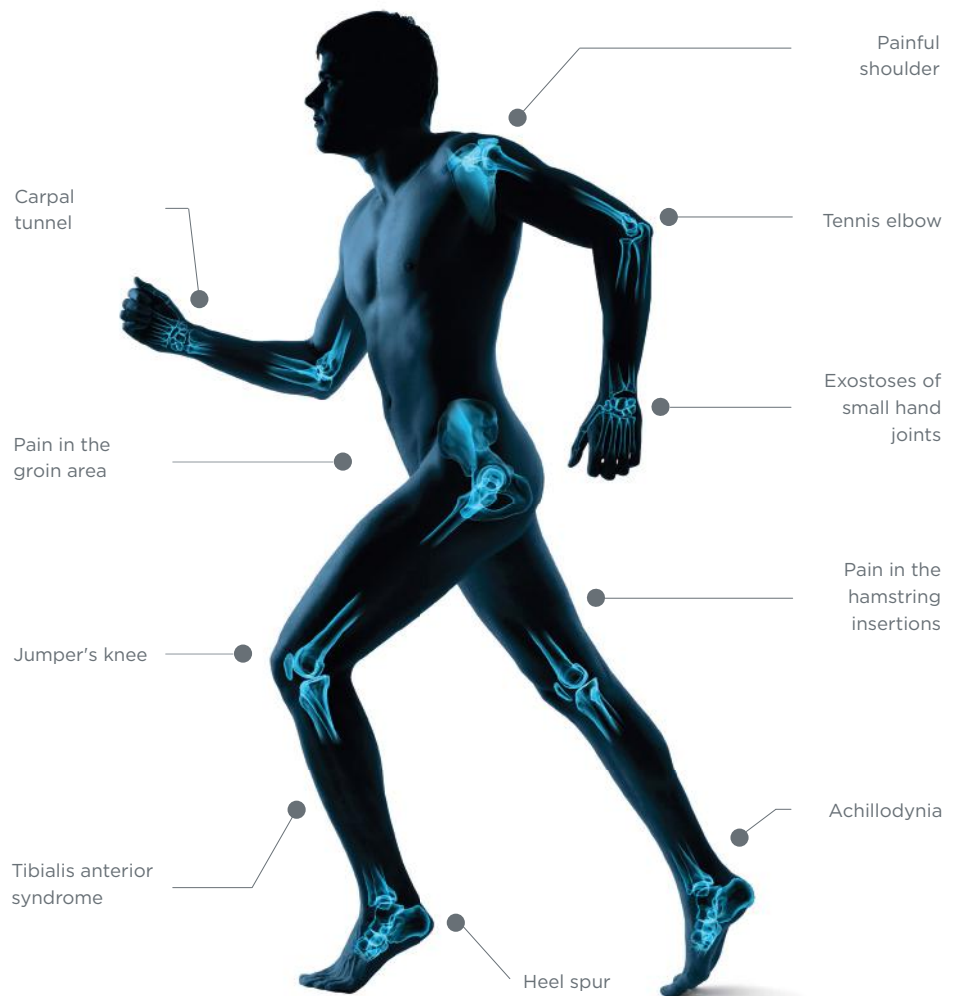


#### Mobility restoration

- Dissolution of calcified fibroblasts



### INDICATIONS



## FEATURES AND BENEFITS OF THE BTL-6000 SHOCKWAVE THERAPY

- Compact design with dimensions of only 32 × 19 × 28 cm
- Portable with weight of mere 7 kg
- Variable frequency settings from 1-20 Hz
- Extremely powerful with pressure up to 5 bars



**Ergonomic applicator**  
designed by users



### TECHNICAL SPECIFICATIONS OF THE BTL-5000 & BTL-6000 SWT

Model	BTL-5000 SWT POWER	BTL-6000 SWT TOPLINE POWER	BTL-6000 SWT TOPLINE	BTL-6000 SWT EASY
Part number	P014.002	P6000.205	P6000.200	P6000.202
User interface	8.4" colour touch screen	5.7" colour touch screen	5.7" colour touch screen	LED interface
Preset protocols	27	27	27	7
User-defined protocols	•	•	•	
Max. pressure	up to 5 bars	up to 5 bars	up to 4 bars	up to 4 bars
Frequency	1-22 Hz	1-20 Hz	1-15 Hz	1-15 Hz
Mode	Single, continuous, burst, intensity gradient	Single, continuous, intensity gradient	Single, continuous, intensity gradient	Single, continuous
Intensity gradient mode	•	•	•	
EULM upgrade	•			
Dimensions	230 × 390 × 260 mm 330 × 220 × 300 mm (air compressor)		320 × 190 × 280 mm	
Weight: main unit/compressor	4.7-5.3 kg/20 kg		7 kg/-	
Mains supply	230 V AC, 50-60 Hz/ 115 V AC, 50-60 Hz		100-240 V AC, 50-60 Hz	
Standard accessories	SWT applicator with exchangeable kit Transmitters: 9, 15 mm multi-focused and 15 mm focused, 1× exchangeable kit, trolley, gel 1000 ml		SWT applicator with exchangeable kit Transmitters: 9, 15 mm multi-focused and 15 mm focused, gel 300 ml	